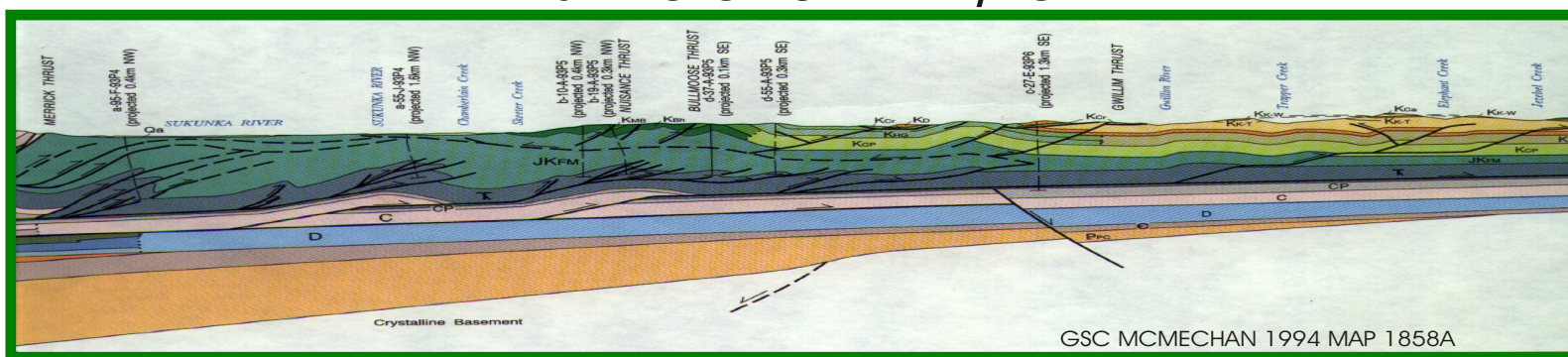


## WOLVERINE/ GRIZZLY / OJAY/ MONKMAN (FOOTHILLS BELT) BRITISH COLUMBIA, CANADA



LINE	LENGTH	FOLD
90-W-1	17.600 KM	3000%
94-W-1A	29.000 KM	4500%
90-W-2	23.400 KM	3000%
90-W-3	24.200 KM	3000%
95-W-4	29.610 KM	6000%
91-W-5	25.000 KM	4500%
94-GS-1	48.600 KM	4500%
95-GS-2	25.470 KM	6000%
95-GS-3	24.840 KM	6000%
95-OJAY-1	37.620 KM	6000%
95-OJAY-2	42.840 KM	6000%

TOTAL 328.180 KM



**INTERNATIONAL  
EXPLORATION CONSULTANTS  
(CANADA) INC.**

Tel (403) 233-7922 Fax (403) 237-6563  
2850, 801-6 th Ave S.W. Calgary, Alberta T2P 4A3